

**KZN**  
VENDER  
KIOSKS  
TUCK SHOPS

**TILLEY**  
**SHEDS** CC

DAVID DRIVE, HIBBERDENE  
P. O. BOX 102, UMZUMBE, 4225

TEL: 039 699 3261  
FAX: 086 202 0024  
CELL: 082 452 7573

Email: [tilley@tilleysheds.co.za](mailto:tilley@tilleysheds.co.za)  
Web: [www.tilleyshed.co.za](http://www.tilleyshed.co.za)

## NUMBER 1 IN STRENGTH, QUALITY AND DURABILITY

Manufactured from

**COLORPLUS**



Pre-painted Aluminium Zinc Coated Sheeting

Designed and Manufactured for South African Conditions

**MAINTENANCE AND RUST FREE**  
**FIRE, VERMIN AND PEST PROOF**  
**CANNOT CRACK, WARP OR ROT**  
**TRANSPORTED IN PANEL FORM**  
**LASTS 4 TIMES LONGER THAN GALVANISED STEEL**  
**EASILY ASSEMBLED WITHOUT THE NEED FOR POWER TOOLS**



MAMA CHAKAS FRANCHISE WITH YVONNE CHAKA CHAKA



### KIOSK PRICE LIST

Size ( W x L )	FLAT ROOF	GABLE ROOF
1,2M X 2,4M	R19 800	R20 800
2,4M X 2,4M	R25 700	R27 200

Bulk orders can be customised according to clients requirements ,  
for example , colour , logos and decals.

Units are extremely strong and durable. They are fabricated in panel  
form for ease of transport and assembly.

### STANDARD FEATURES INCLUDE

**CHALK COLOURED WALLS**  
**ROOF -GREEN OR BLUE (GABLE) GREEN (FLAT)**  
**HATCH (1600MM X 920MM)**  
**SERVICE TABLE ( 1600MM X 300MM)**  
**COLORPLUS STEEL FRAMED FLOOR WITH 18MM SHUTTERBOARD**  
**ADJUSTABLE LEGS**  
**CYLINDRICAL DOOR HANDLE**

### OPTIONAL EXTRA'S

**SHELVING**

200mm wide .  
Runs from wall to wall  
**R180 PLM**



**SPECIALISED CONCRETE BLOCKS FOR ADJUSTABLE LEGS**

Necessary when there is no existing  
Concrete or paving.  
Required if going onto soil , grass ,  
Tar and asphalted areas  
**R170 EACH**



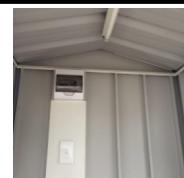
**WINDOW WITH BURGLAR GUARD**

600mm x 900mm

**R980 EACH**

**ELECTRICS**

DB board  
1 x double plug point  
1 x fluorescent  
( not including connection to mains)  
**R3 800**



Free delivery and installation to  
Durban and surrounds.

Surcharge for all other  
areas in KZN apply.

**ALL PRICES INCLUDE VAT**

**PRICES SUBJECT TO REVISION**

